



## BRIEF INFORMATION

### Mega Beam LED Generation III

- Innovative LED technology with powerful light output
- 30% more light than with Generation II with the same power consumption
- Modular line

## PRODUCT FEATURES

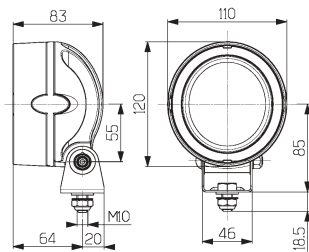
### Lighting technology:

Four high-power LEDs provide the source of light for this work light. These LEDs are multi-volt compatible (12 and 24 V). Due to the low power consumption, the Mega Beam LED is ideal for use on battery-operated vehicles or on vehicles whose alternator is already overloaded. The generation III Mega Beam LED is completely resistant to shock, vibration and voltage fluctuations. This work light is absolutely maintenance-free once it is installed. The integral electronics protect the unit in the event of polarity reversal and guarantee constant brightness even if the operating voltage fluctuates between 9 and 33 V. At 5700 Kelvin, the light emitted from the LED work light is very similar to daylight, making colours easier to distinguish in the darkness than with the yellow light from halogen bulbs. Sensory perception is how the human eye perceives light, and since this light is perceived as being similar to daylight, it prevents rapid eye fatigue.

### Design:

The back of the housing is aluminium and is equipped with large cooling fins, which provide for optimum heat dissipation to ensure a long LED design life. Its compact dimensions make the work light suitable for universal use. The robust work light is resistant to high-pressure cleaning. The front side of the housing has a protruding edge to protect the glass lens. Use the permanently mounted 2-pin cable— which is 2,000 mm long — to connect to the power.

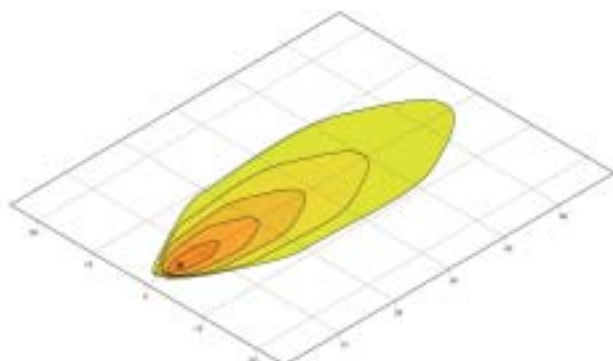
# PRODUCT RANGE



Technical data	
Operating voltage	9 – 33 V
Recommended angle of inclination	10° – 15°
Light source	4 high-power LEDs
Power consumption	13 W
Light output	800 lm
Colour temperature	5700 Kelvin
Protection class	IP 6K9K and IP X7
Type approval	E1
Housing	Aluminium, painted black
Light exit element	83 x 92 mm

1GM 996 136	-311	-361
Close-range illumination	x	x
Upright installation	x	
Suspended installation		x
Recommended inclination angle 10° – 15°	x	x
2,000 mm connector cable	x	x
Glass lens	x	x
Generation III	x	x
IP 6K9K/high-pressure-cleaner	x	x
IP 6K7/waterproof	x	x
Integrated electronics	x	x
Protected against overheating	x	x
Reverse-polarity protected	x	x

# LIGHT DISTRIBUTION



Close-range illumination

