



BRIEF INFORMATION

Power Beam 3000

- Unbeatable vision
- More efficient than xenon
- Compact design

PRODUCT FEATURES



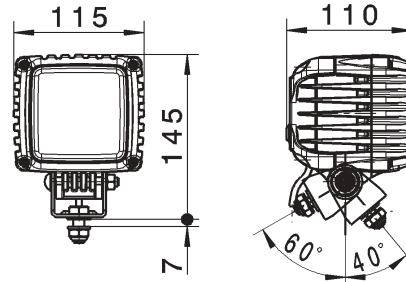
- 16 high-power LEDs
- Enormous output of 3,000 lumen
- Better vision than with xenon thanks to a luminous colour that is similar to daylight
- At the same low input as Xenon (43 Watt)
- Especially resistant to mechanical action by nylon dispersion lenses
- Diecast aluminium housing, bracket made of stainless steel
- A service life of up to 60,000 hours
- No interference with electronic devices e.g. radio
- Polarity reversal protection
- Overvoltage protection
- Overheating protection thanks to integrated thermal sensor
- Protection class IP 6K7 (watertight) and IP 6K9K (resistant to high-pressure cleaning)

TECHNICAL DETAILS

Technical data

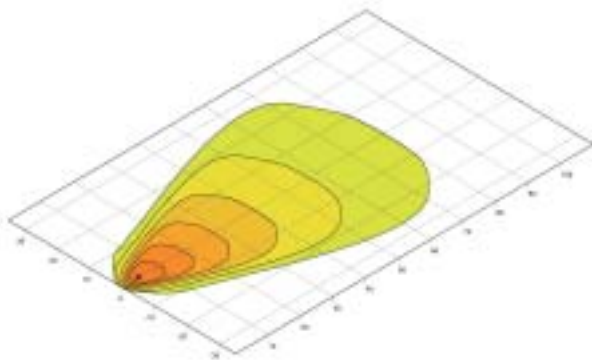
Operating voltage	Multi-voltage 9–33 V
Power consumption	43 W
Luminous flux	3,000 lm permanent light intensity
Colour temperature	5,700° Kelvin
Light output	100% at ambient temperatures of -40 °C to + 50 °C

Technical drawing



PRODUCT OVERVIEW

Light distribution

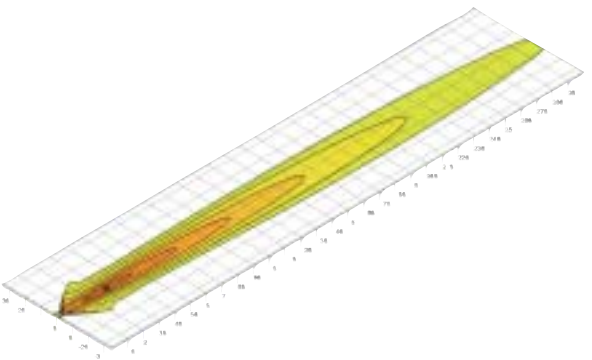


Part number

1GA 996 192-001

Specification

Power Beam 3000
12–24 V LED,
Close-range illumination
Electrical connection: Cable group



1GA 996 192-011

Power Beam 3000
12–24 V LED,
Long-range illumination
Electrical connection: Cable group

